

UNLESS OTHERWISE SPECIFIED:

DIMENSIONS ARE IN MM
TOLERANCES:
FRACTIONAL: $\pm 1/32$
ANGULAR: MACH ± 0.05 BEND $\pm 1^\circ$
TWO PLACE DECIMAL ± 0.25
THREE PLACE DECIMAL ± 0.10

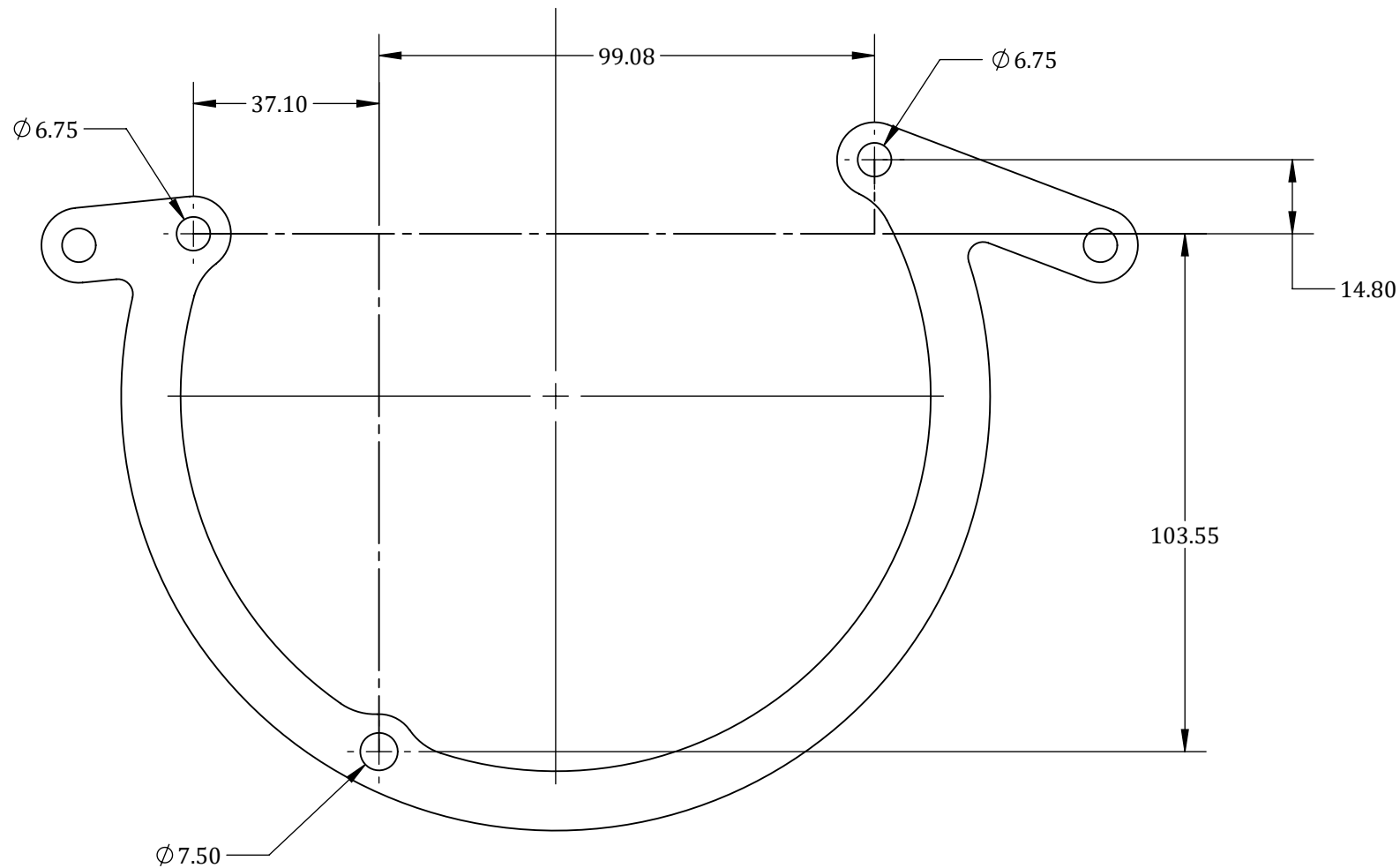
MATERIAL:		14 or 16GA SS 304
FINISH:		
DO NOT SCALE DRAWING		
NAME		DATE
DRAWN BY	HUNTER BABICH	9/2/2025
CHECKED BY		

BENG

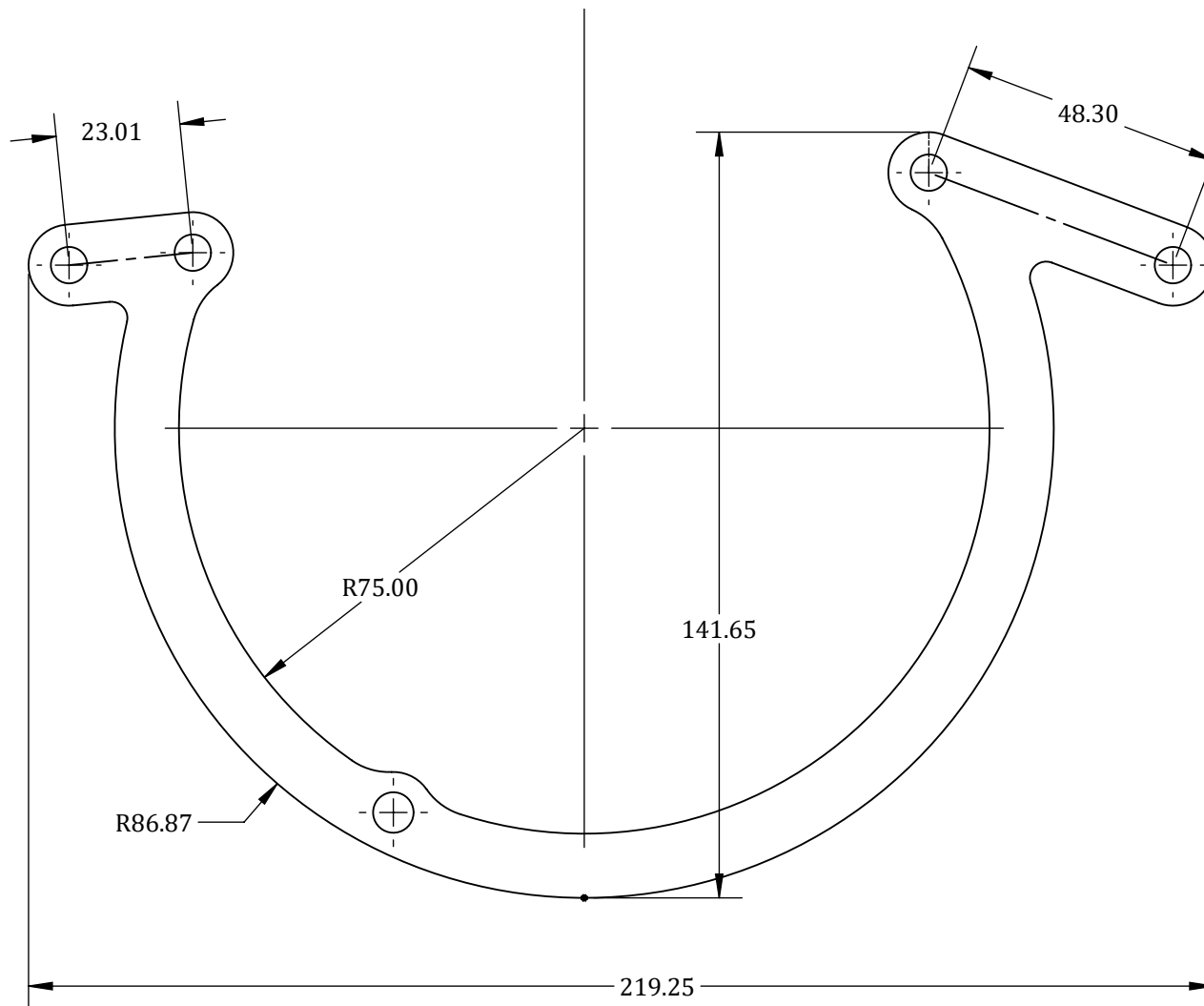
DESCRIPTION

HONDA RC51 (SP2): LEFT SPAL FAN BRACKET
ADAPTER FOR 30103013/30103011

SIZE A	DWG. NO. RC51 - SPAL Bracket (L)	REV 1
SCALE: 3:4	- OEM MOUNT -	SHEET 1 OF 4



UNLESS OTHERWISE SPECIFIED:			<i>BENG</i>		
DIMENSIONS ARE IN MM TOLERANCES: FRACTIONAL: $\pm 1/32$ ANGULAR: MACH ± 0.05 BEND $\pm 1^\circ$ TWO PLACE DECIMAL ± 0.25 THREE PLACE DECIMAL ± 0.10			DESCRIPTION HONDA RC51 (SP2): LEFT SPAL FAN BRACKET ADAPTER FOR 30103013/30103011		
MATERIAL: 14 or 16GA SS 304			SIZE A		
FINISH:			DWG. NO. RC51 - SPAL Bracket (L)		
DO NOT SCALE DRAWING			REV 1		
NAME DATE			SCALE: 3:4		
DRAWN BY	HUNTER BABICH	9/2/2025	- SPAL MOUNTS -		
CHECKED BY			SHEET 2 OF 4		



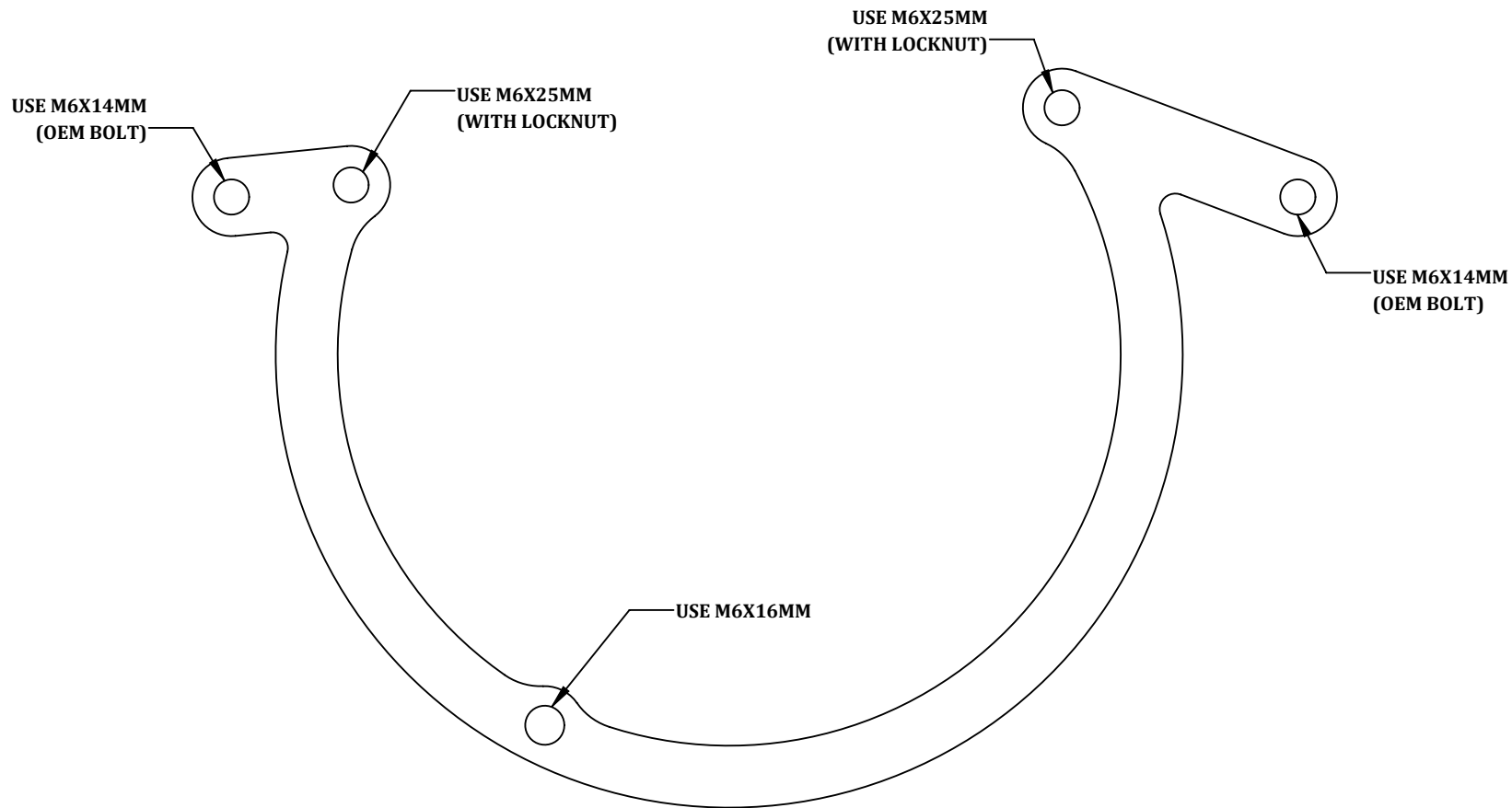
UNLESS OTHERWISE SPECIFIED:
 DIMENSIONS ARE IN MM
 TOLERANCES:
 FRACTIONAL: $\pm 1/32$
 ANGULAR: MACH ± 0.05 BEND $\pm 1^\circ$
 TWO PLACE DECIMAL ± 0.25
 THREE PLACE DECIMAL ± 0.10

MATERIAL:		14 or 16GA SS 304
FINISH:		
DO NOT SCALE DRAWING		
NAME		DATE
DRAWN BY	HUNTER BABICH	9/2/2025
CHECKED BY		

BENG

DESCRIPTION
 HONDA RC51 (SP2): LEFT SPAL FAN BRACKET
 ADAPTER FOR 30103013/30103011

SIZE A	DWG. NO. RC51 - SPAL Bracket (L)	REV 1
SCALE: 3:4	-RELATIONAL-	SHEET 3 OF 4



UNLESS OTHERWISE SPECIFIED:	
DIMENSIONS ARE IN MM	
TOLERANCES:	
FRACTIONAL: $\pm 1/32$	
ANGULAR: MACH ± 0.05 BEND $\pm 1^\circ$	
TWO PLACE DECIMAL ± 0.25	
THREE PLACE DECIMAL ± 0.10	

MATERIAL: 14 or 16GA SS 304		
FINISH:		
DO NOT SCALE DRAWING		
NAME		DATE
DRAWN BY	HUNTER BABICH	9/2/2025
CHECKED BY		

<i>BENG</i>		
DESCRIPTION		
HONDA RC51 (SP2): LEFT SPAL FAN BRACKET ADAPTER FOR 30103013/30103011		
SIZE A	DWG. NO. RC51 - SPAL Bracket (L)	REV 1
SCALE: 3:4	- BOLTS -	SHEET 4 OF 4